



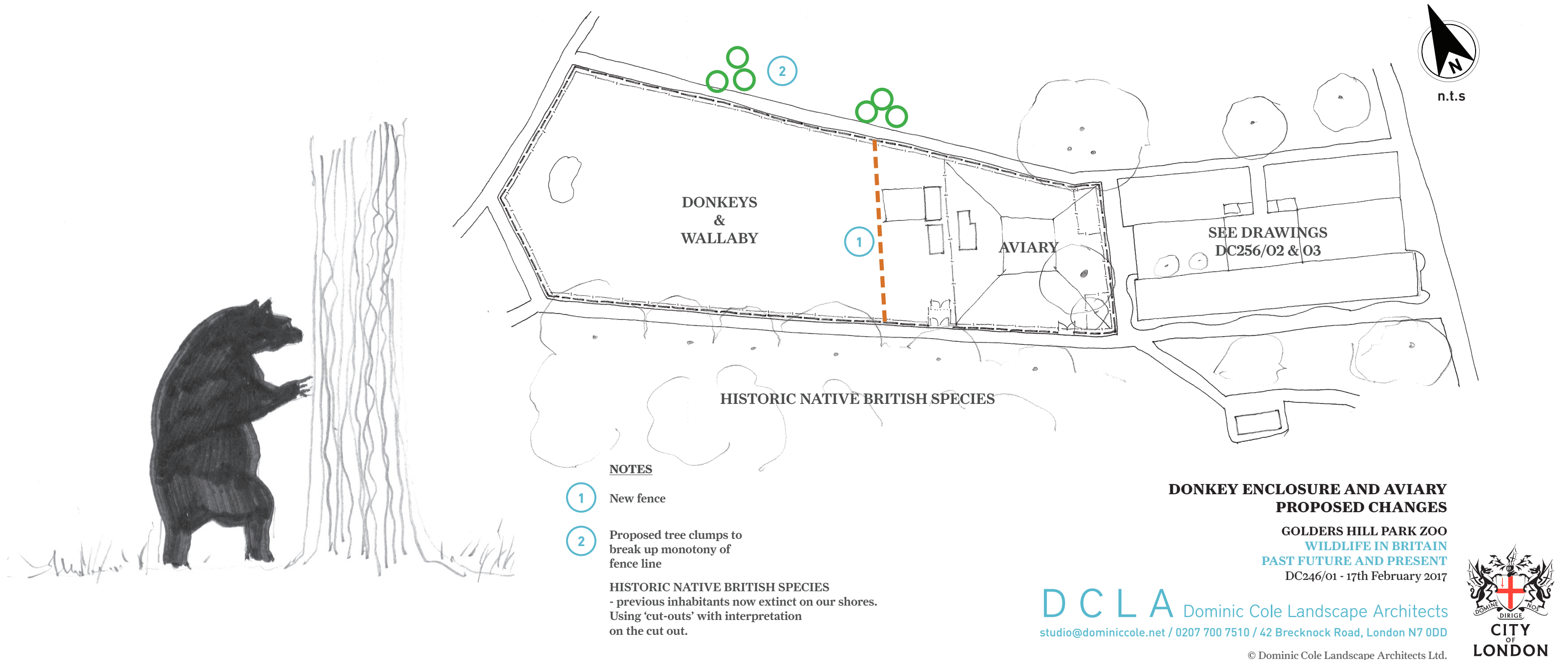
Shed inside donkey enclosure



Donkey enclosure fence line



Use new tree clumps to break up line of fence - note 2 on plan.





WALK THROUGH - RING TAILED LEMUR ON LEFT



WADING BIRD AVIARY (POLY TUNNEL)
OWLS & KOOKABURRA



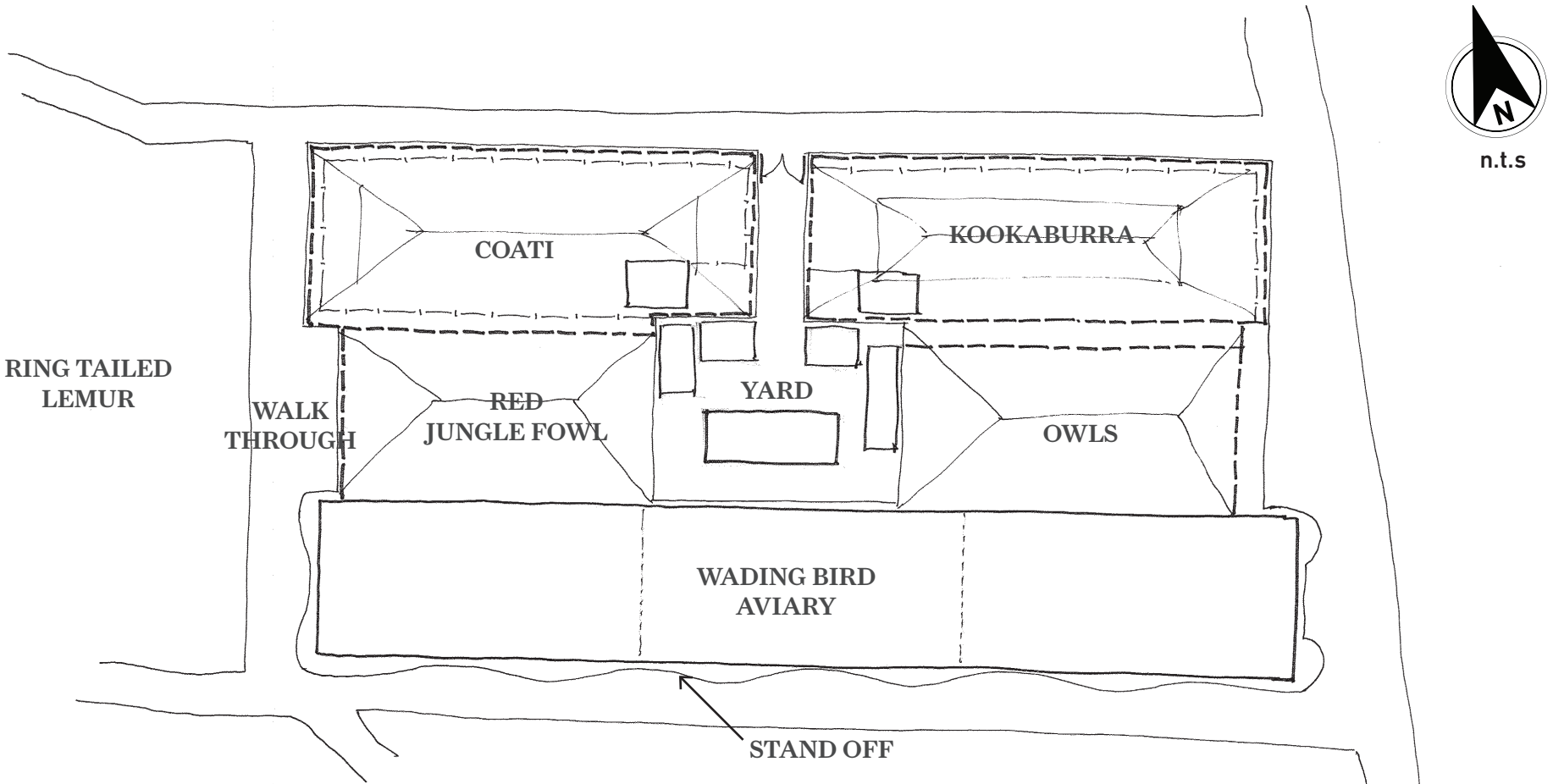
WADING BIRD AVIARY & STAND-OFF RAIL



YARD



RING TAILED LEMUR ENCLOSURE



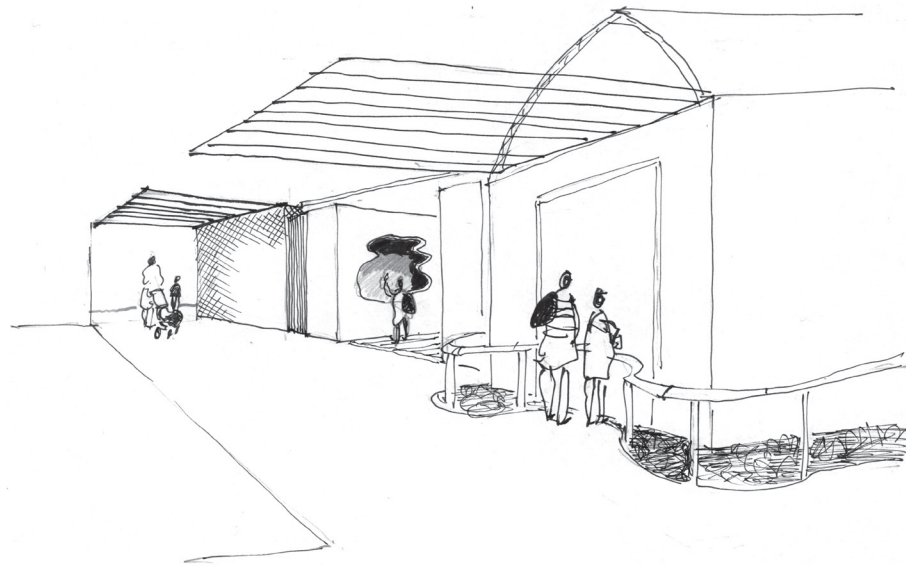
EXISTING ENCLOSURES AROUND
CENTRAL YARD

GOLDERS HILL PARK ZOO
WILDLIFE IN BRITAIN
PAST FUTURE AND PRESENT
DC246/02 - 17th February 2017

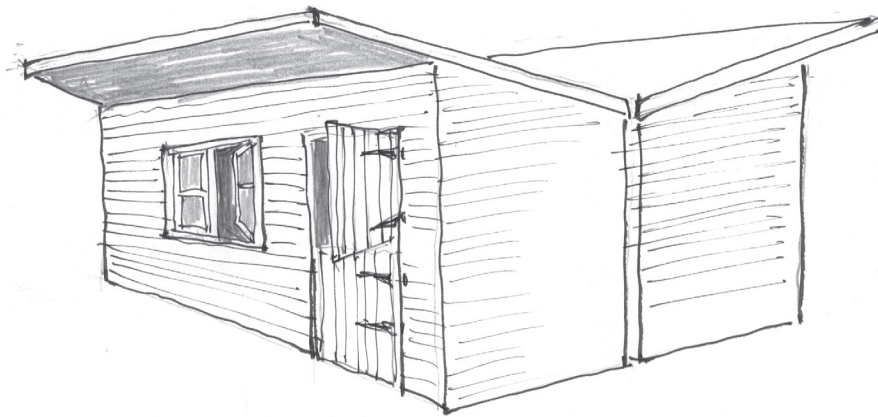
DCLA Dominic Cole Landscape Architects
studio@dominiccole.net / 0207 700 7510 / 42 Brecknock Road, London N7 0DD

© Dominic Cole Landscape Architects Ltd.

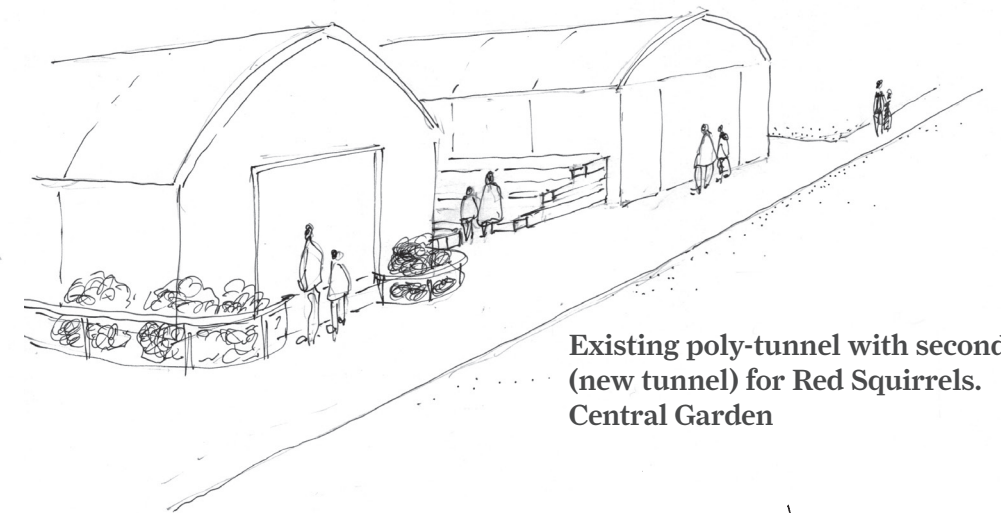




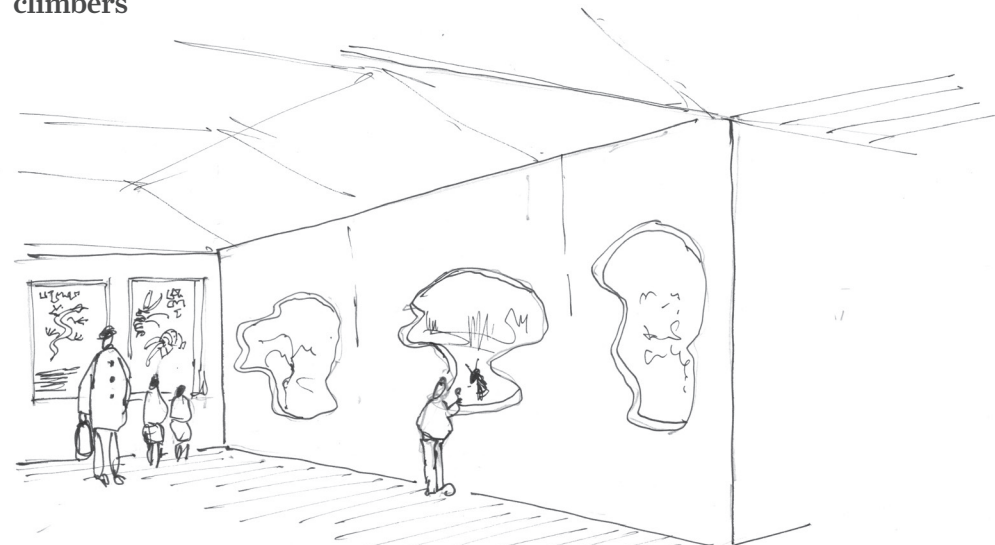
Walk through central vivarium overhead wires and climbers



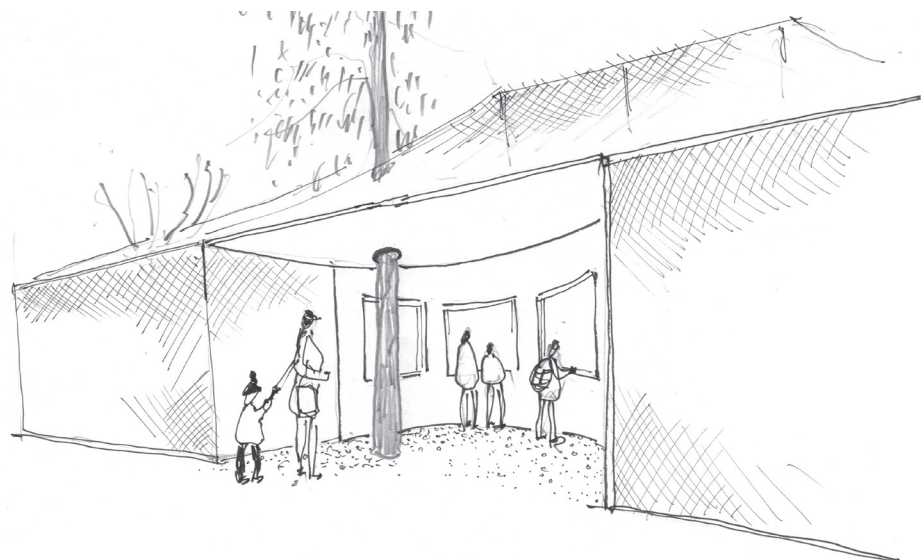
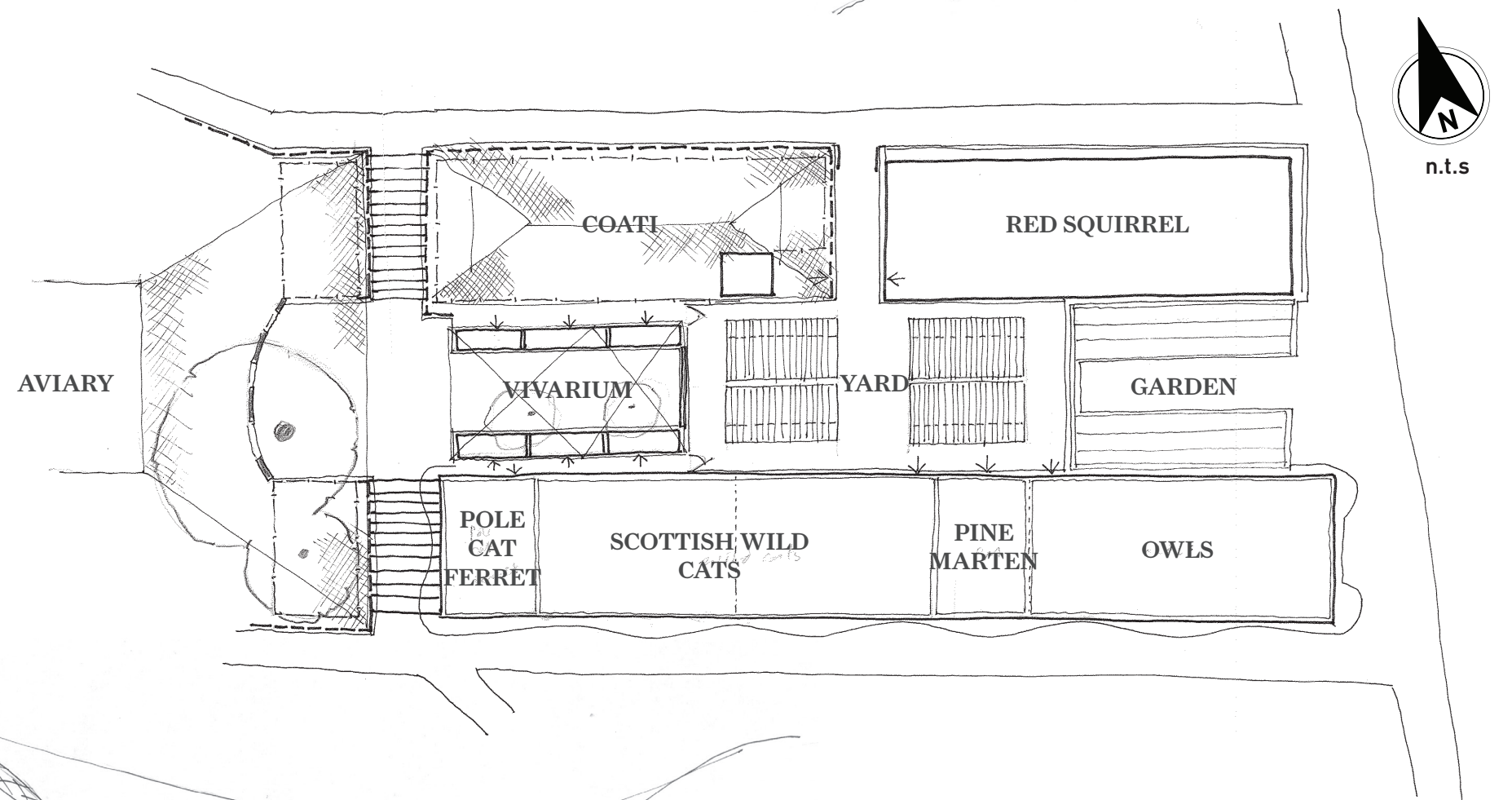
Back to Back 'off the peg' sheds in the yard



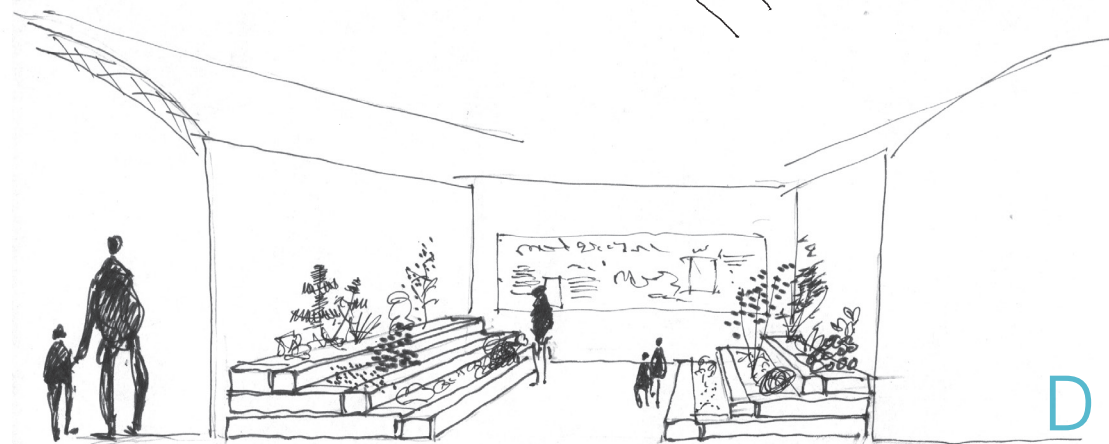
Existing poly-tunnel with second (new tunnel) for Red Squirrels. Central Garden



Vivarium with see through roof, timber decking and interpretation



New viewing area cut into Aviary



Central garden and interpretation

PROPOSED CHANGES TO ENCLOSURES AROUND YARD

GOLDERS HILL PARK ZOO
WILDLIFE IN BRITAIN
PAST FUTURE AND PRESENT
DC246/03 - 17th February 2017

DCLA Dominic Cole Landscape Architects
studio@dominiccole.net / 0207 700 7510 / 42 Brecknock Road, London N7 0DD

© Dominic Cole Landscape Architects Ltd.

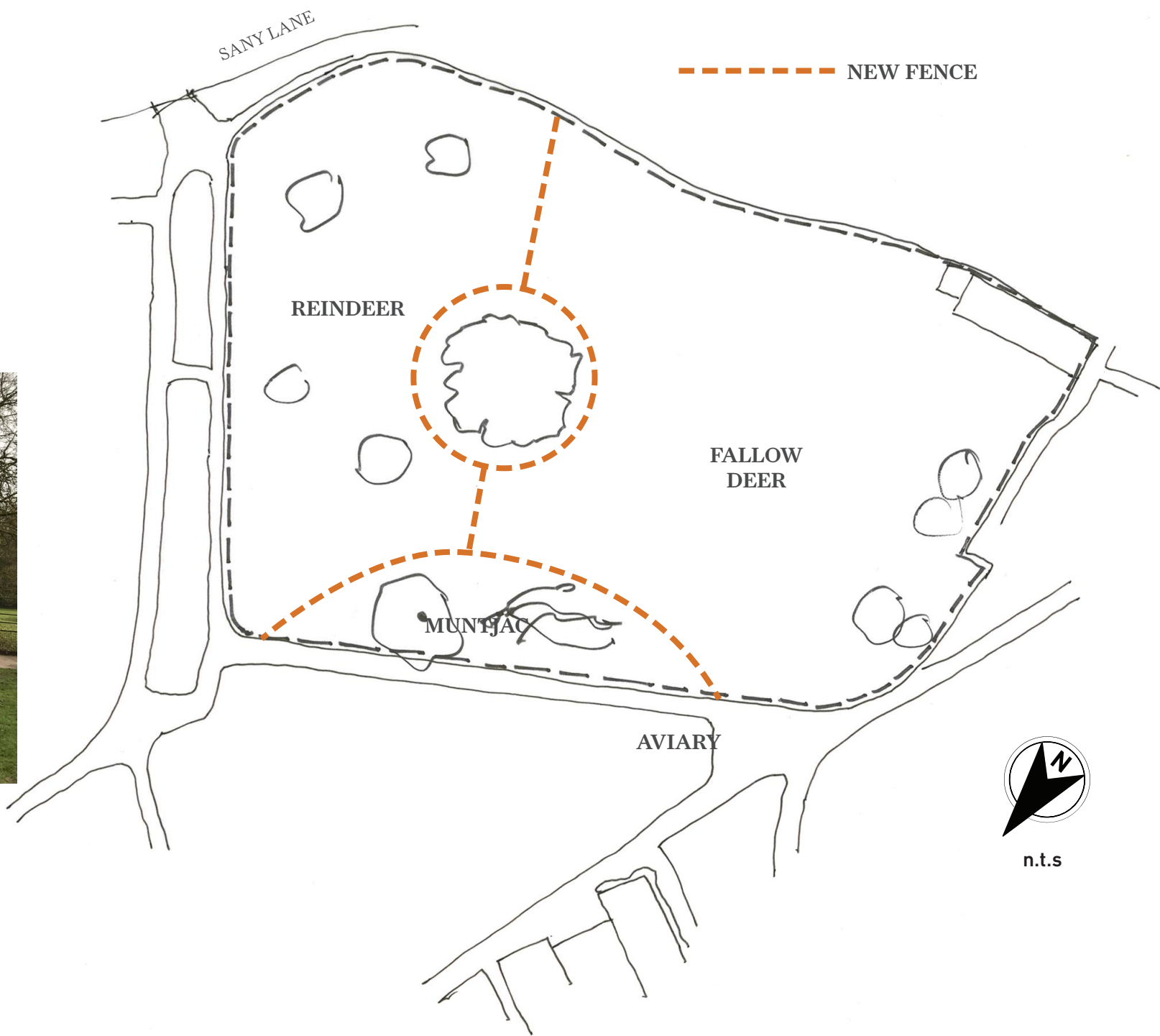




Fallen trees will provide cover for Muntjac



Deer enclosure



**PROPOSED NEW ENCLOSURES INSIDE
DEER ENCLOSURE**

GOLDERS HILL PARK ZOO
WILDLIFE IN BRITAIN
PAST FUTURE AND PRESENT
DC246/04 - 17th February 2017

DCLA Dominic Cole Landscape Architects
studio@dominiccole.net / 0207 700 7510 / 42 Brecknock Road, London N7 0DD

© Dominic Cole Landscape Architects Ltd.

